

**RETURN TO CHS!**

*Coming &  
Going Edition*

**PREPARING FOR  
OUR NEW NORMAL**

# Set reminders...

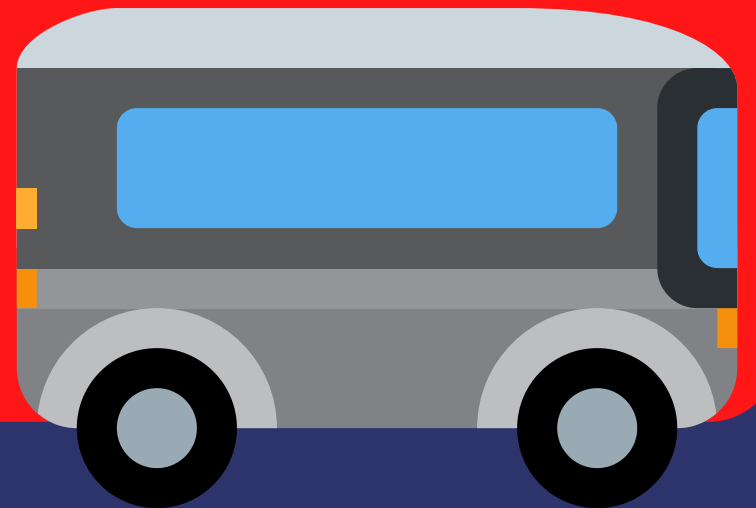
- 7:25 - Doors Open
- 7:45 - First Period
- 2:30 - Doors Close

No after school non-athletic activities.



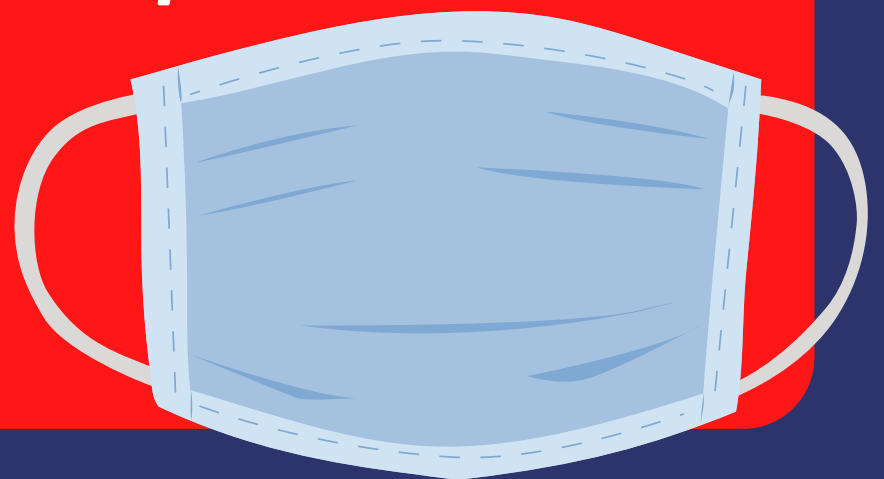
# Get Here...

- **Bus Riders:**
  - Arrive at stop early
  - Load back to front
  - 1 per seat unless related
- **Car Riders:**
  - Drop and go at side doors
  - Doors don't open until 7:25
  - Obtain a parking permit



## **Bring your own...**

- **Face Mask REQUIRED - gaiters permitted with mask**
- **Charged laptop and charging cords REQUIRED**
- **Supplies for learning: paper, pencils, art supplies, etc.**





## **Self Monitor**

- **Check your symptoms.**
- **Stay virtual if you are symptomatic.**
- **Email your teachers to tell them you will attend virtually to stop the spread.**



# **Dismissal**

- **Everyone leaves at dismissal:**
  - Possible exception athletics
- **Dismissed by building zones**
- **Bus riders use front doors**
- **Riders/Walkers all other exits**
- **Return any borrowed tech before leaving for the day.**



**Coming  
soon...**



- **Directions for checking your A/B assignment**
- **Information on Driver Safety course participation**
- **Up Next: Attendance Edition**